

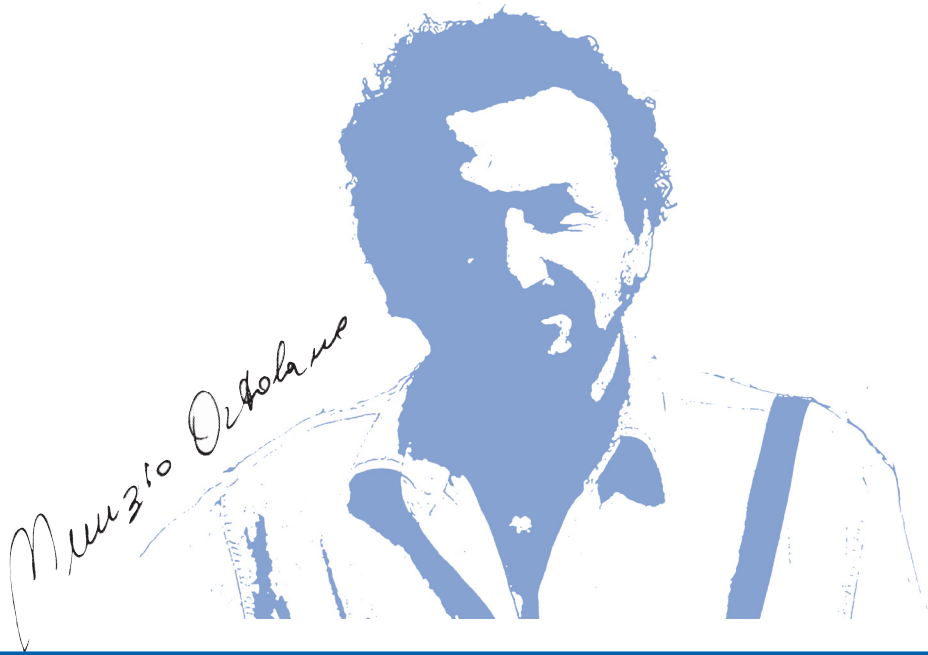


Nunzio Ortolano

Suite for Giuffro



Trumpet solo ad
Concert Band



The music of Nunzio Ortolano

B \flat Solo Trumpet

Suite for Giuffro

Nunzio Ortolano

Manola

$\text{♩} = \text{c. } 90$

mf (passionale e quasi liberamente)

4

9

13

(a piacere)

$\text{♩} = \text{c. } 130$

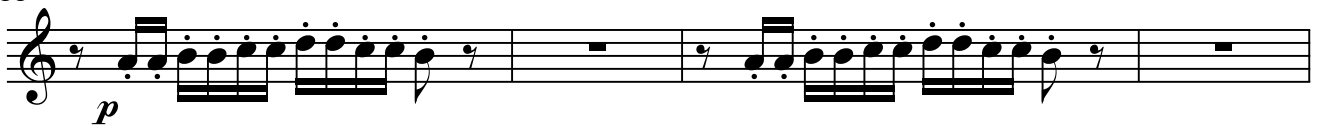
mf

27

32

18

53



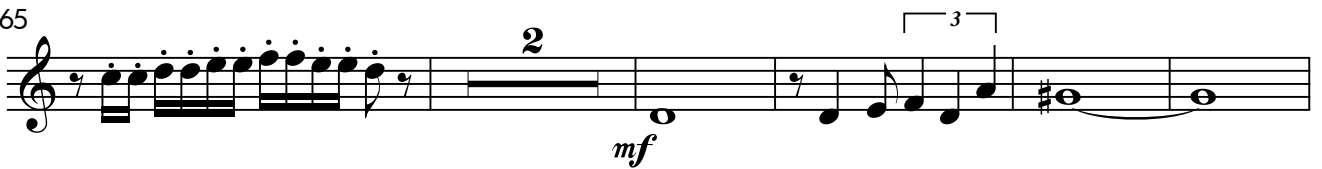
57



61



65



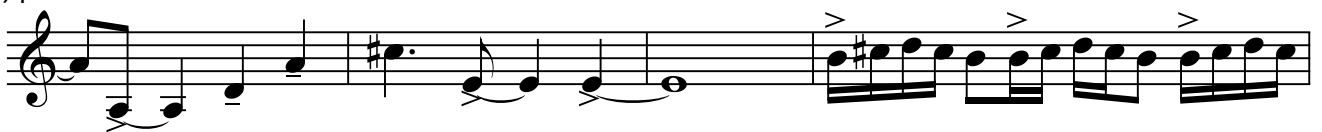
72



78



91



95



B \flat Solo Trumpet

99

Musical staff for measure 99, featuring a treble clef, a key signature of one sharp (F#), and a 4/4 time signature. The staff contains a complex rhythmic pattern of eighth and sixteenth notes with various accents and slurs.

101

Musical staff for measure 101, continuing the rhythmic pattern from the previous measure. It includes a key signature change to two sharps (F# and C#) and a 4/4 time signature.

103

Musical staff for measure 103, continuing the rhythmic pattern. It includes a key signature change to one sharp (F#) and a 4/4 time signature.

105

Musical staff for measure 105, continuing the rhythmic pattern. It includes a key signature change to two sharps (F# and C#) and a 4/4 time signature.

108

Musical staff for measure 108, continuing the rhythmic pattern. It includes a key signature change to one sharp (F#) and a 4/4 time signature.

110

Musical staff for measure 110, continuing the rhythmic pattern. It includes a key signature change to two sharps (F# and C#) and a 4/4 time signature.

112

Musical staff for measure 112, featuring a treble clef, a key signature of two sharps (F# and C#), and a 4/4 time signature. The staff includes a triplet of eighth notes marked with an '8' and a dynamic marking of *f* (forte).

123

Musical staff for measure 123, featuring a treble clef, a key signature of two sharps (F# and C#), and a 4/4 time signature. The staff includes a dynamic marking of *f* (forte).

128

Musical staff for measure 128, featuring a treble clef, a key signature of two sharps (F# and C#), and a 4/4 time signature. The staff includes a dynamic marking of *ff* (fortissimo).

For the INTERNATIONAL TRUMPET GUILD

I tre puntini

Samba $\text{♩} = \text{c. } 135$

11 *f*

Sam - ba Sam - ba Sam - ba

Musical staff 11-16 in 4/4 time, starting with a treble clef. It features a melody with a dynamic marking of *f*. The lyrics "Sam - ba" are written below the notes.

17

Sam - - - - ba *mf*

Musical staff 17-20 in 4/4 time. It features a melody with a dynamic marking of *mf*. The lyrics "Sam - - - - ba" are written below the notes.

21

Musical staff 21-23 in 4/4 time, featuring a melody with a dynamic marking of *mf*.

24

Musical staff 24-26 in 4/4 time, featuring a melody with a dynamic marking of *mf*.

27 *p* *f* 13

Musical staff 27-33 in 4/4 time, featuring a melody with dynamic markings of *p* and *f*, and a measure rest of 13. It includes triplet markings over measures 29 and 30.

44 *mf*

Musical staff 44-50 in 4/4 time, featuring a melody with a dynamic marking of *mf*.

51

Musical staff 51-57 in 4/4 time, featuring a melody with a dynamic marking of *mf* and triplet markings at the end.

58 *f* *p* *f* 2

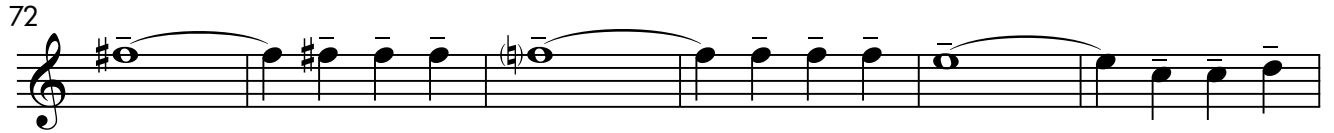
Musical staff 58-65 in 4/4 time, featuring a melody with dynamic markings of *f*, *p*, and *f*, and a measure rest of 2. It includes triplet markings over measures 59, 61, and 62.

66 *mf*

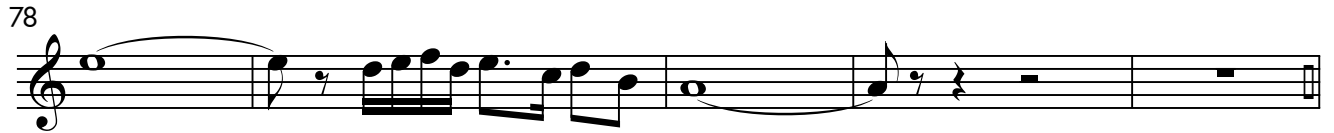
Musical staff 66-72 in 4/4 time, featuring a melody with a dynamic marking of *mf* and triplet markings at the end.

B \flat Solo Trumpet

72

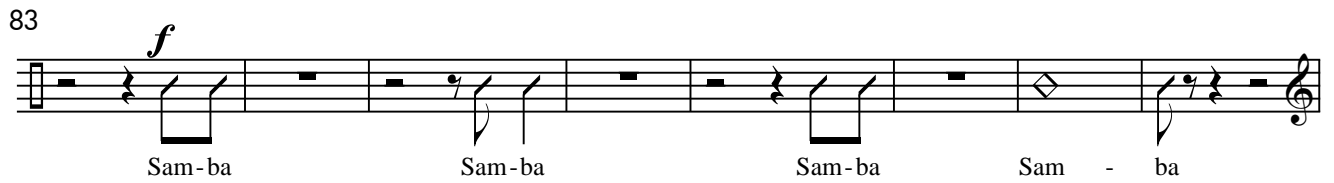


78



83

f



Sam-ba Sam-ba Sam-ba Sam - ba

91

mf



95

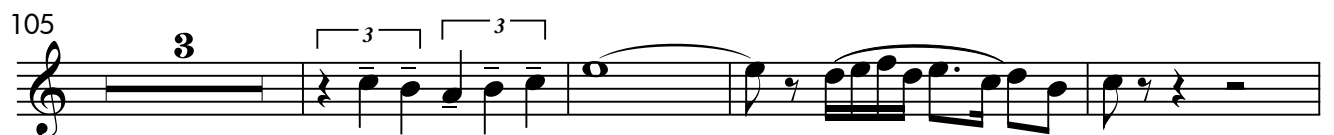


98

f



105



112

ff



G.E.D.18/04/2016

For the INTERNATIONAL TRUMPET GUILD

Suite for Giuffro

Manola

Nunzio Ortolano

$\text{♩} = c. 90$

(Dividendosi)

Flute
quasi liberamente

Oboe
quasi liberamente

Bassoon
mf

E♭ Clarinet

B♭ Clarinet 1
(Dividendosi)
quasi liberamente

B♭ Clarinet 2-3
quasi liberamente

Alto Saxophone 1-2

Tenor Saxophone

Baritone Saxophone
quasi liberamente
mf (in mancanza del fagotto)

B♭ Solo Trumpet
mf (passionale e quasi liberamente)

B♭ Trumpet 1-2

B♭ Trumpet 3

F Horn 1-2

F Horn 3

Trombone 1-2

Trombone 3

Euphonium

Tuba
quasi liberamente
mf (in mancanza del Fagotto e del Sax Baritono)

Timpani

Percussion

Fl.

Ob.

Bsn.

E♭ Cl.

B♭ Cl. 1

B♭ Cl. 2-3

A. Sax. 1-2

T. Sax.

B. Sax.

B♭ Solo Tpt.

B♭ Tpt. 1-2

B♭ Tpt. 3

F Hn. 1-2

F Hn. 3

Tbn. 1-2

Tbn. 3

Euph.

Tb.

Timp.

Perc.

mf

Fl.
Ob.
Bsn.
E♭ Cl.
B♭ Cl. 1
B♭ Cl. 2-3
A. Sax. 1-2
T. Sax.
B. Sax.
B♭ Solo Tpt.
B♭ Tpt. 1-2
B♭ Tpt. 3
F Hn. 1-2
F Hn. 3
Tbn. 1-2
Tbn. 3
Euph.
Tb.
Timp.
Perc.

81

Fl.

Ob.

E♭ Cl.

B♭ Cl. 1

B♭ Cl. 2-3

A. Sax. 1-2

B♭ Solo Tpt.

Euph.

Tb.

Perc.



84

E♭ Cl.

B♭ Cl. 1

B♭ Cl. 2-3

B♭ Solo Tpt.

Euph.

Tb.

Perc.

Fl.

Ob.

Bsn.

E♭ Cl.

B♭ Cl. 1

B♭ Cl. 2-3

A. Sax. 1-2

T. Sax.

B. Sax.

B♭ Solo Tpt.

B♭ Tpt. 1-2

B♭ Tpt. 3

F Hn 1-2

F Hn. 3

Tbn. 1-2

Tbn. 3

Euph.

Tb.

Timp.

Perc.

Fl.

Ob.

Bsn.

E♭ Cl.

B♭ Cl. 1

B♭ Cl. 2-3

A. Sax. 1-2

T. Sax.

B. Sax.

B♭ Solo Tpt.

B♭ Tpt. 1-2

B♭ Tpt. 3

F Hn 1-2

F Hn. 3

Tbn. 1-2

Tbn. 3

Euph.

Tb.

Timp.

Perc.

Fl.
Sam - - - - ba

Ob.
Sam - - - - ba

Bsn.
Sam - - - - ba

E♭ Cl.
Sam - - - - ba

B♭ Cl. 1
Sam - - - - ba

B♭ Cl. 2-3
Sam - - - - ba

A. Sax. 1-2
Sam - - - - ba *mf*

T. Sax.
Sam - - - - ba *mf*

B. Sax.
Sam - - - - ba

B♭ Solo Tpt.
Sam - - - - ba *mf*

B♭ Tpt. 1-2
Sam - - - - ba

B♭ Tpt. 3
Sam - - - - ba *mf*

F Hn 1-2
Sam - - - - ba *mf*

F Hn. 3
Sam - - - - ba *mf*

Tbn. 1-2
Sam - - - - ba

Tbn. 3
Sam - - - - ba

Euph.
Sam - - - - ba *mf*

Tb.
Sam - - - - ba *mf*

Timp.
Sam - - - - ba

Perc.
Sam - - - - ba *mf*

110

Fl.
Ob.
Bsn.
E♭ Cl.
B♭ Cl. 1
B♭ Cl. 2-3
A. Sax. 1-2
T. Sax.
B. Sax.
B♭ Solo Tpt.
B♭ Tpt. 1-2
B♭ Tpt. 3
F Hn. 1-2
F Hn. 3
Tbn. 1-2
Tbn. 3
Euph.
Tb.
Timp.
Perc.

G.E.D.18/04/2016